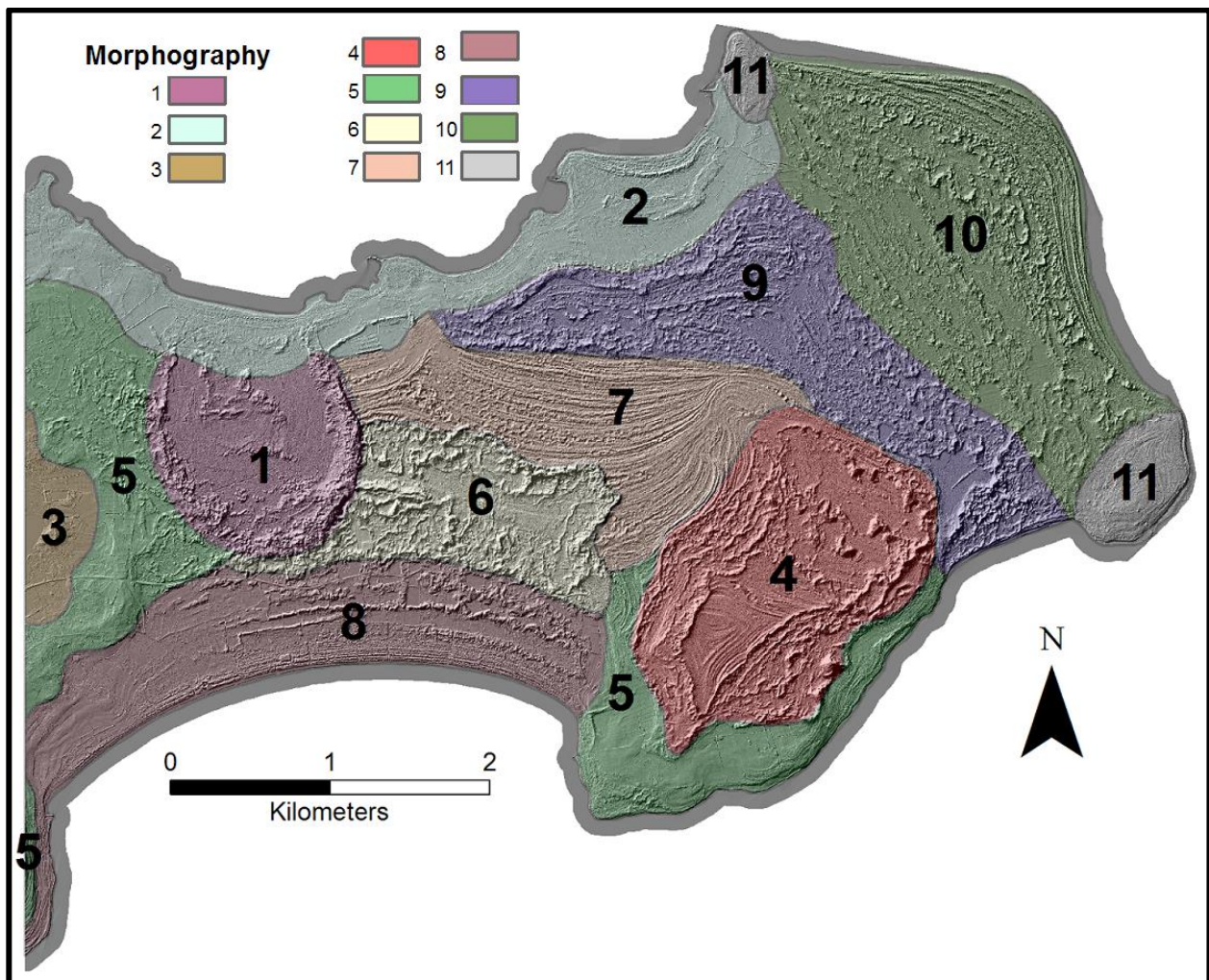


### 3.1.2. Mapping the surface

#### 3.1.2.1. Morphography

The morphographical map was produced as a precursor to the geomorphological map. It serves as an initial basic classification of the different geomorphological zones that can be found on Avanäs. The classifications are based on all LSP maps, as each map accentuates different characteristics of the surface, although mainly the Hillshade map was used extensively. This map emphasises relief of the surface which was used as the main classification characteristic for the morphographical map. The morphographical map is shown in figure 3.6. Due to the descriptive labels of each zone, a legend corresponding with the numbers in the map is included separately below.



**Figure 3.6:** Morphographical map of Avanäs marking the different geomorphological zones around the area. Features of the morphographical map are overlain on the Hillshade map with 80% transparency. Legend units are: [1] Flattened area with horseshoe ridge, [2] Irregular coastline without ridges, [3] Flat, low terrain [4] Highest area, [5] Smooth terrain, [6] Ridge disturbance, [7] Undisturbed fine ridges, [8] Smooth coastline with ridges, [9] Disturbed ridges (high), [10] Disturbed ridges (low), [11] Coastal protrusions with ridges.