

Flowpath Reconstruction of the former Hammerfließ on the basis of the LiDAR-derived Digital Elevation Model (DEM)

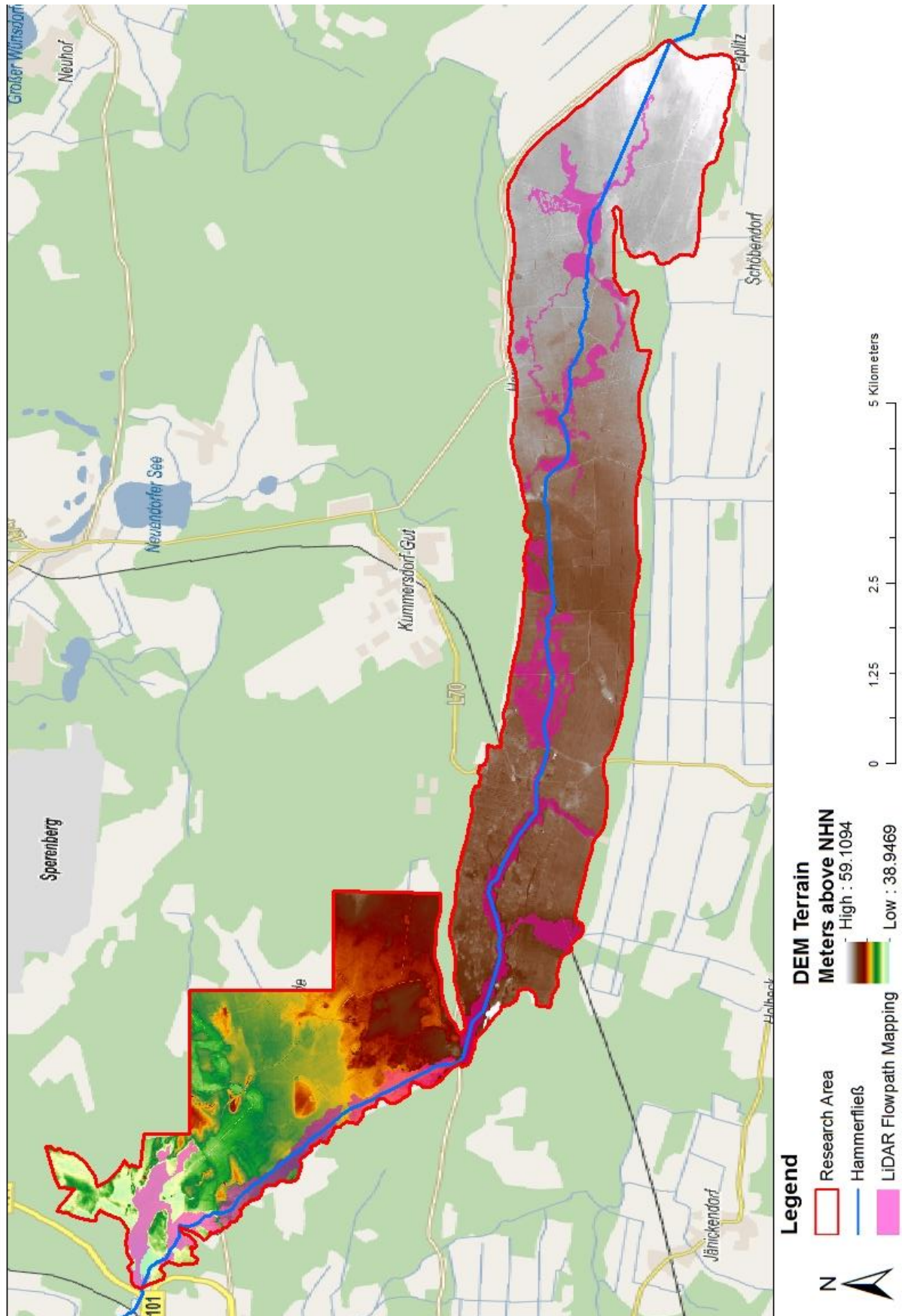


Figure 12: A map of the LiDAR-derived digital terrain model of the research area. The current Hammerfließ channel is shown in a blue line. The mapped possible flowpaths are illustrated in purple. Background topography is the "Digitales Navigationsmodell" (DNM) WMS, retrieved from geospatial information website Brandenburg (Appendix F).