

Fig. 7: Proximity of RCHs to streams. A) Proximity of RCHs in agricultural field to nearest stream site, B) Proximity of RCHs in forest areas to nearest stream site. C) Proximity of RCHs that were confirmed during fieldwork to the nearest stream site. The RCHs were sorted by distance to the stream (RCH 1 having the smallest distance to the nearest stream site).

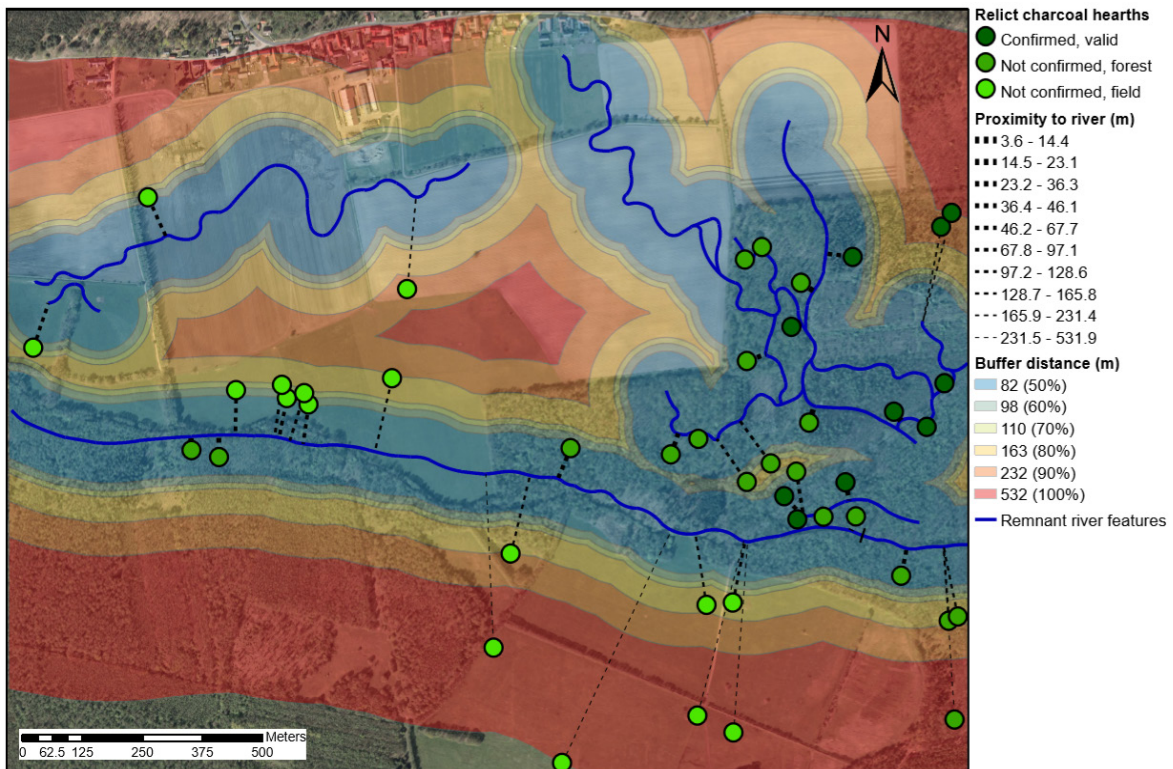


Fig. 8: ArcGIS map depicting the detected RCHs located in the flatland (agricultural fields and forest) of the research area and their distance to the nearest paleo stream site together with the depiction of six buffer zones each corresponding with a percentage of RCHs measured within this buffer zone.